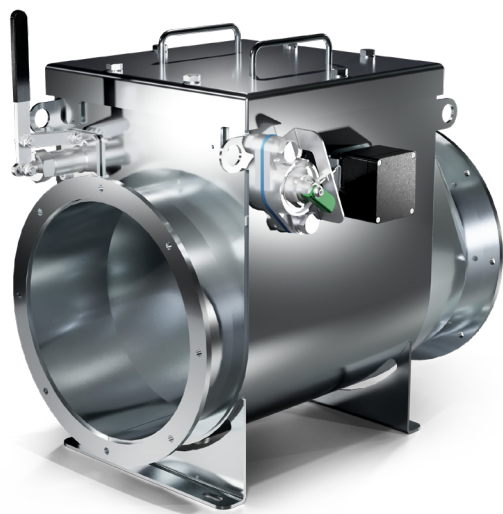




B-FLAP I PRO - EXPLOSION ISOLATION FLAP - STAINLESS STEEL



Explosion isolation flap B-FLAP I PRO is a protective system which prevents propagation of dust explosion through the connecting pipeline into subsequent parts of the protected technology.

Installation of flap B-FLAP I PRO is possible regardless of flow direction in the pipeline. Arisen explosion pressure wave closes the B-FLAP I PRO so the technology is separated from its connected parts and propagation of flame front, and explosion pressure is stopped. B-FLAP I PRO is locked in a closed position if an explosion occurs.

Explosion isolation flap B-FLAP I PRO is designed in accordance with European norm 2014/34/EU and certified in accordance with EN 16647, EN 15089, and EN ISO 80079-36. Explosion isolation flap B-FLAP I PRO belongs to equipment group II of explosion protection devices for hazardous areas inside flap as Zone 20 and 1 and outside flap as Zone 21 and 1.

MATERIAL

Welded body	Stainless Steel AISI 304.
Flange gasket	Silicone supplied with B-FLAP I PRO.
Fasteners	Supplied with B-FLAP I PRO.
Flange	In accordance with DIN EN 12 220 - R1 (DN 100 ÷ DN 500), R2 (DN 560 ÷ DN 630).

OPTIONAL ACCESSORIES

Position indicator	Indicates position of B-FLAP I PRO (open/closed), indicator is connected to intrinsically safe relay. Certified in accordance with ATEX.
Dust sensor	Indicates dust pollution inside welded body of B-FLAP I PRO, sensor is connected to intrinsically safe relay.
Intrinsically safe relay	Creates an interface between a safe and a dangerous zone.
Special flange gasket	Gasket seal in accordance to customer's need.
B-FLAP I PRO abrasion-resistant finish	Protects the flap against abrasion.

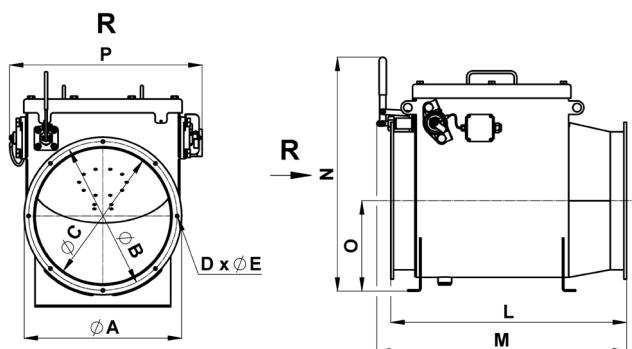
TEMPERATURE SPECIFICATIONS

Ambient temperature	-40 °C to 80 °C (-20 °C to 60 °C for versions with electrical accessories)
Operating temperature	-40 °C to 200 °C
Storage temperature	-10 °C to 40 °C

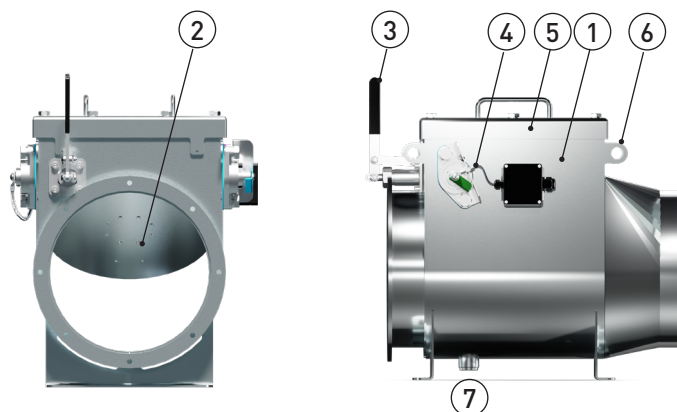
Type	Part number	Explosive class	ØA [mm] [in]	ØB [mm] [in]	ØC [mm] [in]	D x ØE [n x mm]	L [mm] [in]	N [mm] [in]	P [mm] [in]	Weight [kg]
DN 100	P-ZKL-100-ST1	St1	152	132	100	4 x 9.5	280	303	244	9
	P-ZKL-100-ST3	St3	(6)	(5.2)	(3.9)		(11)	(11.9)	(9.6)	
DN 125	P-ZKL-125-ST1	St1	177	157	125	4 x 9.5	305	327	269	11
	P-ZKL-125-ST3	St3	(7)	(6.2)	(4.9)		(12)	(12.9)	(10.6)	
DN 150	P-ZKL-150-ST1	St1	202	182	150	6 x 9.5	330	353	294	13
	P-ZKL-150-ST3	St3	(8)	(7.2)	(5.9)		(13)	(13.9)	(11.6)	
DN 200	P-ZKL-200-ST1	St1	253	233	200	6 x 9.5	390	403	344	18
	P-ZKL-200-ST3	St3	(10)	(9.2)	(7.9)		(15.4)	(15.9)	(13.5)	
DN 250	P-ZKL-250-ST1	St1	303	283	250	6 x 9.5	510	541	417	41
	P-ZKL-250-ST3	St3	(11.9)	(11.1)	(9.8)		(20.1)	(21.3)	(16.4)	
DN 280	P-ZKL-280-ST1	St1	343	317	280	8 x 9.5	560	576	447	48
	P-ZKL-280-ST3	St3	(13.5)	(12.5)	(11)		(22)	(22.7)	(17.6)	
DN 300	P-ZKL-300-ST1	St1	363	337	300	8 x 9.5	580	591	467	51
	P-ZKL-300-ST3	St3	(14.3)	(13.3)	(11.8)		(22.8)	(23.3)	(18.4)	
DN 315	P-ZKL-315-ST1	St1	378	352	315	8 x 9.5	600	606	482	54
	P-ZKL-315-ST3	St3	(14.9)	(13.9)	(12.4)		(23.6)	(23.9)	(19)	
DN 355	P-ZKL-355-ST1	St1	418	392	355	8 x 9.5	630	646	522	62
	P-ZKL-355-ST3	St3	(16.5)	(15.4)	(14)		(24.8)	(25.4)	(20.6)	
DN 400	P-ZKL-400-ST1	St1	464	438	400	8 x 9.5	695	692	567	72
	P-ZKL-400-ST3	St3	(18.3)	(17.2)	(15.7)		(27.4)	(27.2)	(22.4)	
DN 450	P-ZKL-450-ST3	St3	514	488	450	8 x 9.5	750	742	619	88
			(20.2)	(19.2)	(17.7)		(29.5)	(29.2)	(24.4)	
DN 500	P-ZKL-500-ST3	St3	564	538	500	8 x 9.5	800	792	669	101
			(22.2)	(21.2)	(19.7)		(31.5)	(31.2)	(26.3)	
DN 560	P-ZKL-560-ST3	St3	664	629	560	16 x 14	930	876	745	157
			(26.1)	(24.8)	(22)		(36.6)	(34.5)	(29.3)	
DN 630	P-ZKL-630-ST3	St3	734	698	630	16 x 14	1005	946	815	180
			(28.9)	(27.5)	(24.8)		(39.6)	(37.2)	(32.1)	

More detailed information in user manual B-FLAP I PRO.

DIMENSIONS SCHEME



ESSENTIAL PARTS



1. Welded body
2. Sealing part
3. Locking mechanism
4. Position indicator
5. Welded lid
6. Lifting bolts
7. Dust sensor socket